

# Intelligent Efficiency

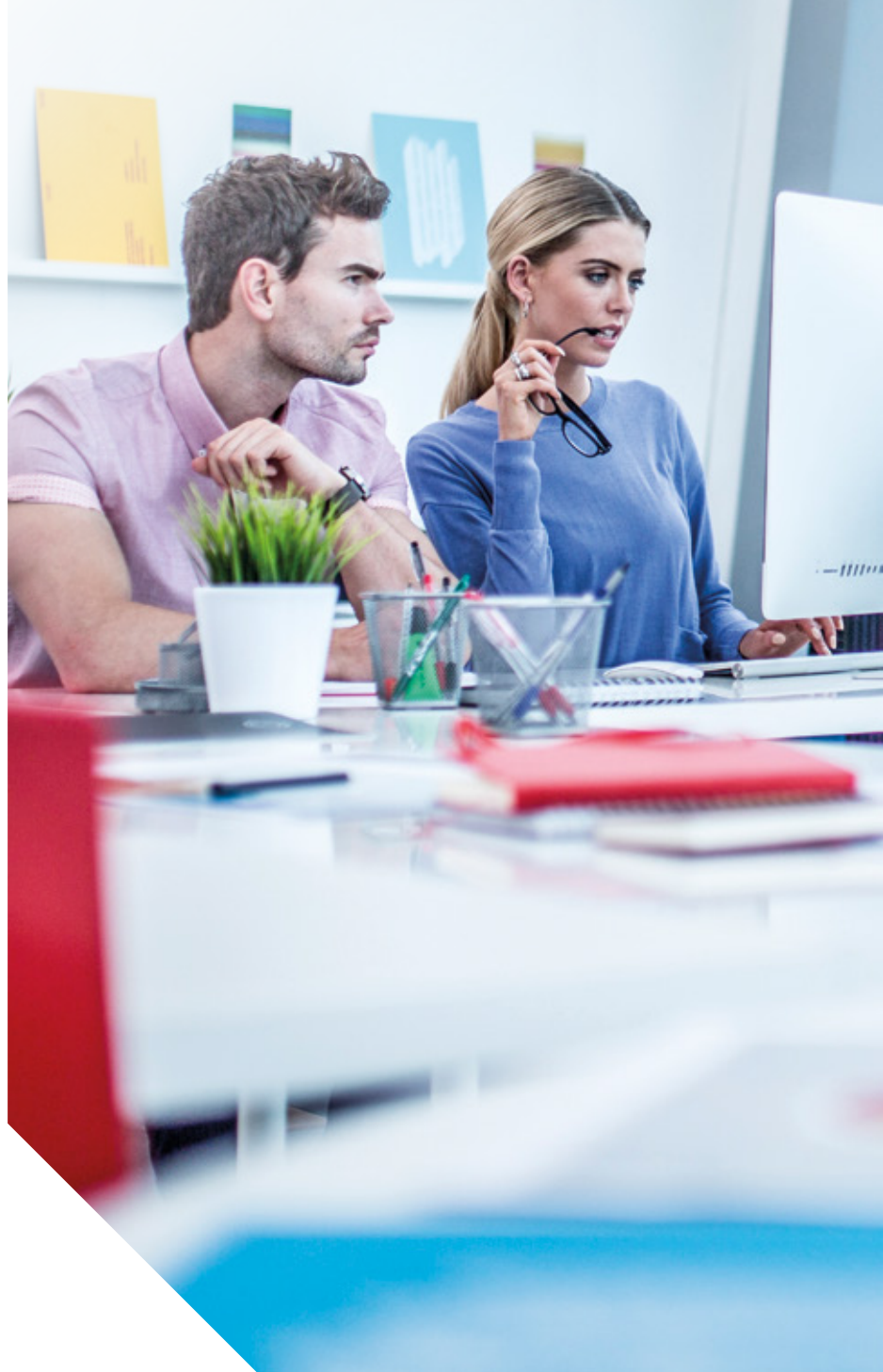


Introducing Brother's New  
**Professional Colour Laser Range**

# Technology that helps your business thrive

At Brother, we want to be a true technology partner for your business. And we understand that for a print infrastructure to be a success, it has to offer you flexibility, reliability and affordability alongside good-quality printing and fast scan speeds. Most of all, it should have a positive impact on everybody's productivity and efficiency.

Designed to meet the needs of high-volume users, our new Professional Colour Laser range lets you print with confidence, offering you speedy print and scan times and lower costs thanks to super and ultra high-yield toners. Add to that enhanced security, intelligent efficiency-boosting features and scalable paper tray options, and you have a printer that maximises productivity in even the most demanding business environment.





## Maximise Productivity

We understand the importance of a productive and cost-effective workflow. The new range operates at high speeds allowing you to print (31ppm) and scan (up to 100ipm) quickly and efficiently, alongside time-reducing features such as single pass duplex (2-sided) scanning. If your business grows, the colour laser range can grow with it, providing adaptable paper handling options with up to 4 additional paper trays providing a total paper capacity of 2,380 pages. And, with ultra high-yield cartridges allowing you to print up to 9,000 pages, this cost effective solution provides low monochrome and colour cost per page and total cost of ownership.

## Intelligent Efficiency

The speedy and smart new Professional Colour Laser range allows you to achieve improved efficiency and productivity. Enhanced document scanning and an Automatic Document Feeder (ADF) that holds up to 80 sheets offers a quick and simple way to scan direct to the cloud or your network. With the touch of a button you can scan, copy or fax utilising up to a 17.6cm customisable touchscreen with your own time-saving configurable shortcuts, while in the meantime, putting your multi-tasking skills to good use as you print and scan simultaneously with Dual Access operation. Work smarter utilising paper tray sensors and paper low notifications, allowing you to maximise workflow efficiency.

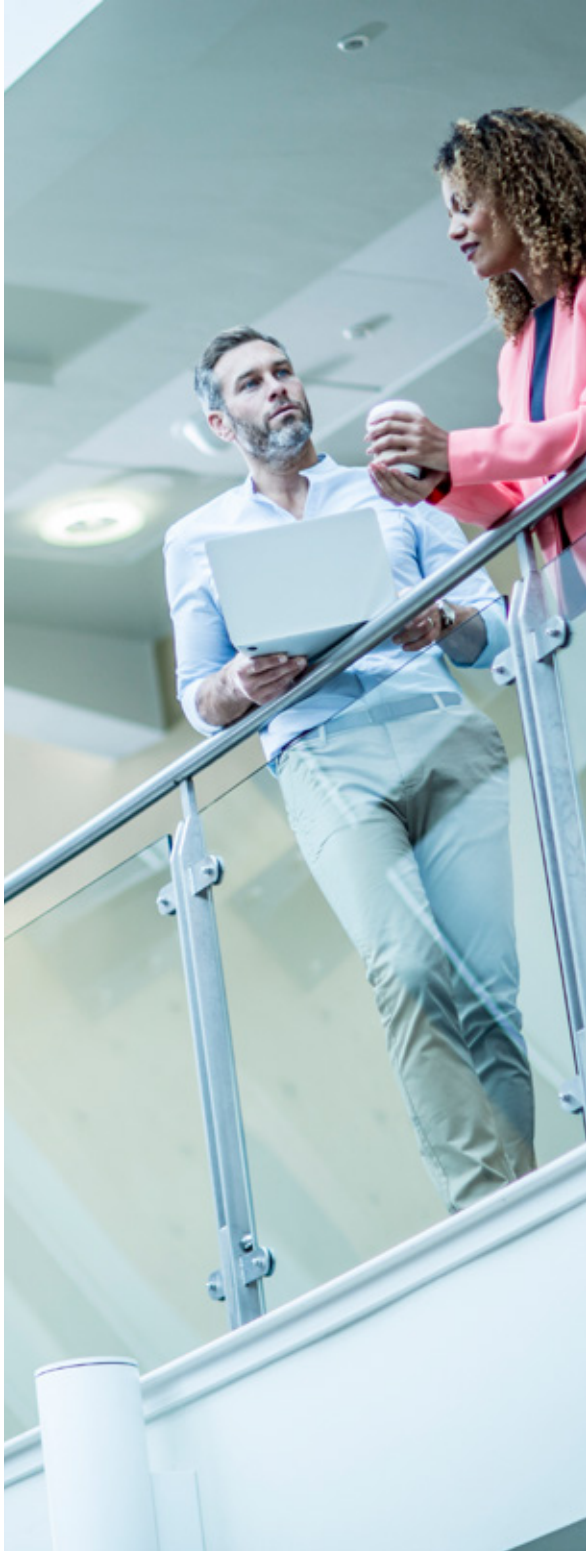
## Designed for Business

Protect what matters to your business with advanced security capabilities of the new Professional Colour Laser range to ensure you are always in full control of your print infrastructure. You can improve data protection by restricting machine access with network user authentication and secure function lock, which allows you to password-protect certain device functions. Furthermore, the NFC reader can be used to integrate with secure pull printing\*, enabling users to release their print job from any chosen device by swiping an ID card or entering a PIN. The new range allows for professional integration with custom software solutions using Open Interface Platform (BSI) along with easy print fleet management utilising the free downloadable BRAdmin Professional software. Built to last, the new Professional Colour Laser range is constructed with longer-life components and a robust build quality you can really rely on.

\* PaperCut MF Software must be integrated to enable the pull-printing capabilities.

# Delivering for even the most demanding businesses

If you need flexibility, reliability, and above all, affordability, the multi-functional Professional Colour Laser range is ideal. Delivering fast print and scan speeds and resilient security for a low total cost of ownership, these machines help your business take efficiency to the next level.



## MFC-L9570CDW

**ALL-IN-ONE COLOUR LASER  
PRINTER WITH LARGE LCD AND  
ADVANCED SECURITY**

Print, Scan, Copy, Fax

Up to 31ppm Colour & Monochrome Print Speed

Up to 100ipm Scan Speed

Up to 300 Sheet Paper Input

Up to 80 Sheet 2-sided (duplex) ADF

17.6cm Touchscreen

NFC (for mobile print/scan & card authentication)

USB, Wireless & Gigabit Wired Network

64 Shortcuts

Up to 9,000 Black, Cyan, Magenta & Yellow Ultra High-Yield Toners\*

Up to 6,500 Black, Cyan, Magenta & Yellow Inbox Super High-Yield Toners\*

3 x Optional 250 sheet Lower Trays /  
2 x Optional 500 sheet Lower Trays /  
4 x Optional 520 Sheet Tower Tray



## MFC-L8900CDW

**ALL-IN-ONE COLOUR LASER  
PRINTER WITH ADVANCED  
PAPER HANDLING**

Print, Scan, Copy, Fax

Up to 31ppm Colour & Monochrome Print Speed

Up to 56ipm Scan Speed

Up to 300 Sheet Paper Input

Up to 70 Sheet 2-sided (duplex) ADF

12.6cm Touchscreen

NFC (for mobile print/scan & card authentication)

USB, Wireless & Gigabit Wired Network

64 Shortcuts

Up to 6,500 Black, Cyan, Magenta & Yellow Super High-Yield Toners\*

Up to 3,000 Black and 1,800 Cyan, Magenta & Yellow Inbox Toners\*

3 x Optional 250 sheet Lower Trays /

2 x Optional 500 sheet Lower Trays /

4 x 520 Sheet Tower Tray



## MFC-L8690CDW

**ALL-IN-ONE WIRELESS COLOUR LASER  
PRINTER FOR EASY AND RELIABLE  
PRINTING, SCANNING AND SHARING.**

Print, Scan, Copy, Fax

Up to 31ppm Colour & Monochrome Print Speed

Up to 56ipm Scan Speed

Up to 300 Sheet Paper Input

Up to 50 Sheet 2-sided (duplex) ADF

9.3cm Touchscreen

USB, Wireless & Gigabit Wired Network

48 Shortcuts

Up to 4,500 Black and 4,000 Cyan, Magenta & Yellow High-Yield Toners\*

Up to 3,000 Black and 1,800 Cyan, Magenta & Yellow Inbox Toners\*

3 x Optional 250 sheet Lower Trays

## OPTIONAL ACCESSORIES AND SUPPLIES

LT-330CL 250 Sheet tray

LT-340CL 500 Sheet tray

TT-4000 4 x 520 Sheet Tower Tray  
(TC-4000 also needed)

TC-4000 Tower Tray Connector

DR-441CL Drum

BU-330CL Belt

WT-320CL Waste toner

Maintenance Kit 100,000 pages

\* Approximate declared yield value in accordance with ISO/IEC19798

# Fast and affordable business colour

Our new Professional Colour Laser range offers fast colour and monochrome printing at a low cost per page, and an affordable total cost of ownership.

The range includes essential extras like Wi-Fi and NFC connectivity to make mobile working easier without compromising on security.



## HL-L9310CDW

**PROFESSIONAL COLOUR LASER PRINTING, THAT CAN GROW AS YOUR BUSINESS GROWS**

### Print

Up to 31ppm Colour & Monochrome Print Speed

Up to 300 Sheet Paper Input

6.8cm Touchscreen

NFC (for mobile print & card authentication)

USB, Wireless & Gigabit Wired Network

Up to 9,000 Black, Cyan, Magenta & Yellow Ultra High-Yield Toners\*

Up to 6,500 Black, Cyan, Magenta & Yellow In-box Super High-Yield Toners\*

3 x Optional 250 sheet Lower Trays /  
2 x Optional 500 sheet Lower Trays /  
4 x Optional 520 Sheet Tower Tray

## HL-L8360CDW

**WIRELESS COLOUR LASER PRINTER WITH INTUITIVE USER INTERFACE**

### Print

Up to 31ppm Colour & Monochrome Print Speed

Up to 300 Sheet Paper Input

6.8cm Touchscreen

NFC (for mobile print & card authentication)

USB, Wireless & Gigabit Wired Network

Up to 6,500 Black, Cyan, Magenta & Yellow Super High-Yield Toners\*

Up to 3,000 Black and 1,800 Cyan, Magenta & Yellow In-box Toners\*

3 x Optional 250 sheet Lower Trays /  
2 x Optional 500 sheet Lower Trays /  
4 x Optional 520 sheet Tower Tray

## HL-L8260CDW

**SIMPLE AND EASY TO USE, WIRELESS COLOUR LASER PRINTER**

### Print

Up to 31ppm Colour & Monochrome Print Speed

Up to 300 Sheet Paper Input

2 Line LCD

USB, Wireless & Gigabit Wired Network

Up to 4,500 Black and 4,000 Cyan, Magenta & Yellow High-Yield Toners\*

Up to 3,000 Black and 1,800 Cyan, Magenta & Yellow In-box Toners\*

3 x Optional 250 sheet Lower Trays

\* Approximate declared yield value in accordance with ISO/IEC19798

## With a Customisable User Interface, Brother Lets You Decide

Brother's Professional Colour Laser Multi-Function Centres give you the control, with customisable user Interfaces of up to 64 shortcut buttons for Scan, Copy or Fax. Save time in staff training for IT administrators and provide smooth one-touch operation for End Users - Brother lets you decide the optimal configuration to meet the needs of any office workflow.

## Manage Your Brother Print Fleet with BRAdmin Professional 3

Brother's centralised Print Management Tool BRAdmin Professional 3, can provide a variety of information to deliver an efficient and monitored printer set up. Generate monthly usage reports, simultaneously update firmware or send email notifications when a machine is running low on consumables - you can maximise the uptime of your fleet while optimising workflow.

## Create Solutions with Brother Solutions Interface (BSI)

BSI is Brother's Open Interface Development platform where Software developers and Systems Integrators can create custom solutions for and integrate with Brother devices. Develop solutions which can enhance Printing and Scanning control while reducing costs and enhance workflow with multi-site deployment and management from a single location. For more information on BSI, visit <https://youtu.be/Y3JBvCSAoB4>.

HL-L8360CDW



Functions



Settings



Toner

# Multi-Functional Range Specifications

	MFC-L8690CDW	MFC-L8900CDW	MFC-L9570CDW
<b>General</b>			
9.3cm Colour Touchscreen	○	○	○
12.6cm Colour Touchscreen	○	○	○
17.6cm Colour Touchscreen	○	○	○
<b>Print</b>			
Up to 31 pages per minute monochrome & colour	○	○	○
Up to 14 images per minute 2-sided monochrome & colour	○	○	○
Up to 2,400 x 600dpi Resolution	○	○	○
Print Languages: PCL6, PCL XL, BR-Script3 (Postscript®3™ Language Emulation), PDF Version 1.7, XPS Version 1.0	○	○	○
Up to 5,555 pages Target Monthly Print Volume <sup>4</sup>	○	○	○
<b>Scan</b>			
Up to 1,200 x 2,400dpi (from flatbed), 1,200 x 600dpi (from ADF), 19,200 x 19,200dpi (Enhanced)	○	○	○
Scan to USB, Email, Image, OCR & File <sup>1</sup>	○	○	○
Scan to SharePoint®, Network Folder (Windows® only), FTP, SFTP, Email Server <sup>2</sup> , Cloud services <sup>3</sup> , Brother Apps <sup>3</sup>	○	○	○
Scan direct to Box, Dropbox, Evernote™, Facebook, Flickr, Google Drive™, OneDrive & OneNote <sup>3</sup>	○	○	○
<b>Copy</b>			
Up to 31 copies per minute monochrome & colour	○	○	○
Up to 1,200 x 600dpi	○	○	○
<b>Fax</b>			
33.6kbps Super G3	○	○	○
Fax documents anywhere in the world over the Internet <sup>2</sup>	○	○	○
<b>Connectivity</b>			
USB	○	○	○
Gigabit Wired Ethernet (10Base-T/100Base-TX/1000Base-T)	○	○	○
Wireless IEEE 802.11b/g/n & Wi-Fi Direct™	○	○	○
NFC for secure authentication, mobile print & scan	○	○	○
<b>Mobile</b>			
iPrint&Scan, Brother Print Service plugin for Android, AirPrint & Mopria	○	○	○
<b>Paper Handling</b>			
Standard Input Tray - 250 Sheets	○	○	○
Multi Purpose Tray - 50 Sheets	○	○	○
Optional Lower Tray 250 Sheets x 3 Trays	○	○	○
Optional Lower Tray 500 Sheets x 2 Trays	○	○	○
Optional Tower Tray 520 Sheets x 4 Trays	○	○	○
Output Tray - Face Down 150 sheets, Face Up (Straight Paper Path) - 1 sheet	○	○	○
2-sided (duplex) Automatic Document Feeder (ADF)	○	○	○

<sup>1</sup> Requires Brother Software.

<sup>2</sup> Optional download needed for some models.

<sup>3</sup> Must be web connected.

<sup>4</sup> Calculations based on requirement of Maintenance Kits.



# Printer Range Specifications

	HL-L8260CDW	HL-L8360CDW	HL-L9310CDW
<b>Display</b>			
2 Line LCD Display	<input type="checkbox"/>	<input type="checkbox"/>	<input type="checkbox"/>
6.8cm Colour Touchscreen	<input type="checkbox"/>	<input type="checkbox"/>	<input type="checkbox"/>
<b>Print</b>			
Up to 31 pages per minute monochrome & colour	<input type="checkbox"/>	<input type="checkbox"/>	<input type="checkbox"/>
Up to 14 images per minute 2-sided (duplex) monochrome & colour	<input type="checkbox"/>	<input type="checkbox"/>	<input type="checkbox"/>
Up to 2,400 x 600dpi Resolution	<input type="checkbox"/>	<input type="checkbox"/>	<input type="checkbox"/>
Print Languages: PCL6, PCL XL, BR-Script3 (Postscript®3™ Language Emulation), PDF Version 1.7, XPS Version 1.0	<input type="checkbox"/>	<input type="checkbox"/>	<input type="checkbox"/>
Up to 5,555 pages Target Monthly Print Volume <sup>4</sup>	<input type="checkbox"/>	<input type="checkbox"/>	<input type="checkbox"/>
<b>Connectivity</b>			
USB	<input type="checkbox"/>	<input type="checkbox"/>	<input type="checkbox"/>
Gigabit Wired Ethernet (10Base-T/100Base-TX/1000Base-T)	<input type="checkbox"/>	<input type="checkbox"/>	<input type="checkbox"/>
Wireless IEEE 802.11b/g/n & Wi-Fi Direct™	<input type="checkbox"/>	<input type="checkbox"/>	<input type="checkbox"/>
NFC cards for secure authentication and mobile print	<input type="checkbox"/>	<input type="checkbox"/>	<input type="checkbox"/>
<b>Mobile</b>			
iPrint&Scan, Brother Print Service plugin for Android, AirPrint & Mopria	<input type="checkbox"/>	<input type="checkbox"/>	<input type="checkbox"/>
<b>Paper Handling</b>			
Standard Input Tray - 250 Sheets	<input type="checkbox"/>	<input type="checkbox"/>	<input type="checkbox"/>
Multi Purpose Tray - 50 Sheets	<input type="checkbox"/>	<input type="checkbox"/>	<input type="checkbox"/>
Optional Lower Tray 250 Sheets x 3 Trays	<input type="checkbox"/>	<input type="checkbox"/>	<input type="checkbox"/>
Optional Lower Tray 500 Sheets x 2 Trays	<input type="checkbox"/>	<input type="checkbox"/>	<input type="checkbox"/>
Optional Tower Tray 520 Sheets x 4 Trays	<input type="checkbox"/>	<input type="checkbox"/>	<input type="checkbox"/>
Output Tray - Face Down 150 sheets, Face Up (Straight Paper Path) - 1 sheet	<input type="checkbox"/>	<input type="checkbox"/>	<input type="checkbox"/>





With over 100 years in operation, Brother International is globally recognised as a brand synonymous with delivering product innovation and customer satisfaction. A specialist in its product lines, Brother is always 'At Your Side,' with its customer first approach in all aspects of business. Brother combines this customer satisfaction and its strong commitment to environmental conservation to manufacture innovative, reliable and practical products in the printing, sewing, imaging and labelling markets.

Brother International Australia was established in 1977 as a wholly owned subsidiary of Brother Industries, which was founded in 1908 in Japan. With a head office located in Sydney and State offices nationally throughout Australia, Brother has grown from humble beginnings to a diversified multinational corporation.

## Brother Earth

Brother has made a commitment to sustainability and making a positive difference to the environment. Brother Earth is a Brother initiative and aims to build a society that achieves sustainable development by taking responsibility and considering the environmental impact of all aspects of business operations. At Brother Earth, visitors can choose how funds are allocated and see how Brother is contributing to environmental sustainability on a global level. 'Click for the Earth' at [www.BrotherEarth.com](http://www.BrotherEarth.com) and Brother will contribute to an environmental conservation project on your behalf.

## Brother Commercial Division

Brother's range of business solutions are known the world over for being both intuitive for end users and highly friendly for IT administrators to manage. However, reliable products are not all that Brother has to offer corporates. When a business needs a tailor-made solution, Brother's nationally deployed Commercial Division can help you by discussing your specific requirements and environment as a whole.

Just as it has done with large-scale corporate deployments like Pumpkin Patch and Lowes, Brother can adjust almost any of its offerings to suit your needs. Whether you require firmware changes to integrate with an existing network, or adjustments to the devices themselves, Brother has both the ability and the drive to make its solutions work for you and your business.

# Other Product Ranges from Brother's Commercial Series:



Mobile Printers

**Pictured: PJ-733**



Rugged Receipt  
and Label Printers

**Pictured: RJ-2150**



Business  
Document Scanners

**Pictured: ADS-3000N**



Professional Monochrome  
Laser Devices

**Pictured: MFC-L6900DW**



Business Inkjet Devices

**Pictured: MFC-J5930DW**



Industrial Labellers

**Pictured: PT-E550WVP**



High-Volume  
Office Labellers

**Pictured: PT-P950NW**



Professional  
QL Labellers

**Pictured: QL-820NB**

## CONTACT US

**Phone:**  
1300 885 989

**Email:**  
[corporatesales@brother.com.au](mailto:corporatesales@brother.com.au)

**Website:**  
[corpsolutions.brother.com.au](http://corpsolutions.brother.com.au)

**brother**  
at your side

Does your printing need  
an efficiency boost?

---

If you like the sound of vivid colour and crisp black text with added cost efficiency, upgrade to our Professional Colour Lasers.

Contact Brother's Commercial Division on:

**Tel:** 1300 885 989 **E-mail:** [corporatesales@brother.com.au](mailto:corporatesales@brother.com.au)

**Website:** <http://corpsolutions.brother.com.au/>

[www.brother.com.au](http://www.brother.com.au)