



Industrial Labeller

A purpose built labeller to add to your toolbox. Create long lasting, durable and easy to peel labels for components in electrical environments.

- Cable, Faceplate and Sequential Numbering shortcuts for quick function access
- 200 symbols including electrical, security, audio/visual and safety symbols
- Includes tape cassette, AC adapter, carry case and electricians guide
- Heavy duty labels resistant to fade, abrasion and extreme temperatures



The PT-E110VP and its durable tape supplies help ensure clear identification for cabling, panels and installations.



PT-E110VP

Create long lasting labels in various colour combinations and widths with this industrial labeller. With dedicated functions to make common labelling tasks quick and easy, and with everything supplied in a hard carry case, the PT-E110VP is an invaluable tool for electricians and other professional trades.



Fast 20mm / second print speed

Gets the job done quickly by printing each label in just a few seconds.



Cable wrap

Identify cables quickly with easy-to-read labels.



Cable flag

Select your cable diameter to print the correct length of label.



Dedicated number keypad

Speeds up the input of numeric labels.



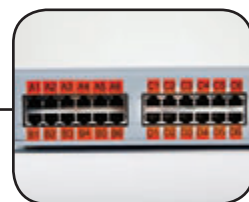
Graphic display

Easily view symbols and preview your label before printing.



Face plate

Label socket outlets, network points and telephone extension faceplates for quick identification.



Sequential numbering

Print labels containing a sequence of numbers or letters.



200 built-in symbols

Includes common electrical, datacom, AV, security and safety symbols.

Brother TZE laminated labels – designed to last

Brother P-touch laminated TZe tapes consist of six layers of materials, resulting in a thin, extremely strong label. The characters are then formed within a thermal transfer ink and sandwiched between two protective layers of PET (polyester film). The result is a virtually indestructible label that can withstand even the harshest conditions. As the labels have been tested to the extreme, you can be confident of a professional quality label that has been designed to last. For more information on Brother's durable TZe tapes, visit https://www.brother.com.au/pdf/consumables/TZe_Tapes_Technical_Data.pdf



Laminated



Temperature Resistant



Water Resistant



Fade Resistant



Abrasion Resistant



Chemical Resistant



Easy Peel

PT-E110VP Features / Specifications

Hardware		Built-in software	
Housing dimensions (mm)	111(w) x 58(d) x 204(h)	Built-in fonts	1
Housing weight	400g	Built-in symbols	200 symbols including electrical, security, audio/video and safety symbols
Tape size	TZe tape: 3.5, 6, 9, 12mm	Character sizes	3 sizes
Print resolution	180 dpi for crisp, legible text	Character widths	3 widths (extended, medium, condensed)
Max. label length	300mm	Font styles	10
Max. print height	9mm for easy-to-read labels	Frames	1
Max. print speed	20mm / sec	Underline	Yes
Cutter type	Built-in manual label cutter	Max. number of lines	2
Keyboard type	PC layout QWERTY keyboard with dedicated numeric keypad	Horizontal alignment	Automatic length labels: left aligned Pre-set length labels: centre aligned
Number of keys	60	Pre-set format (auto format)	None
LCD display	16 character graphic LCD with real preview feature	Tape length setting	Yes (30-300 mm)
LCD size	58 mm x 23 mm	Tape margin settings	Narrow, half, full, chain print
Print preview	Yes	Tab function	Yes
Text buffer	Max 80 chrs	Labelling functions	General, Cable Wrap, Cable Flag, Faceplate and Sequential Numbering
Label memory	720 chrs (9 files x 80 chrs)	Copy (repeat) printing	Yes (1-50)
Power or HR03	Requires 6 x AAA batteries (LR03 alkaline rechargeable Ni-MH) (not supplied) AC adapter (included)	Print preview	Yes (graphic preview)
		Auto power off	Yes (approx. 5 min)
		Unit change	Yes (inch/mm)
		Language change	21 languages (English, German, French, Spanish, Portuguese, Portuguese-Bra, Italian, Dutch, Danish, Norwegian, Swedish, Finnish, Hungarian, Czech, Polish, Romanian, Slovene, Slovak, Croatian, Turkish, Malay)
Items Included			
Items included	PT-E110 labelling machine AC Adapter (AD-5000ES) 9mm black on white Flexible-ID tape cassette (8m) Carry Case User guide		
Supplies			
TZe Tape cassettes	3.5, 6, 9, 12mm		

Optional Accessories

TC4 tape cutter

P-touch

TZe
TAPE

Contact:

brother
at your side



facebook.com/brotheraustralia
www.brother.com.au